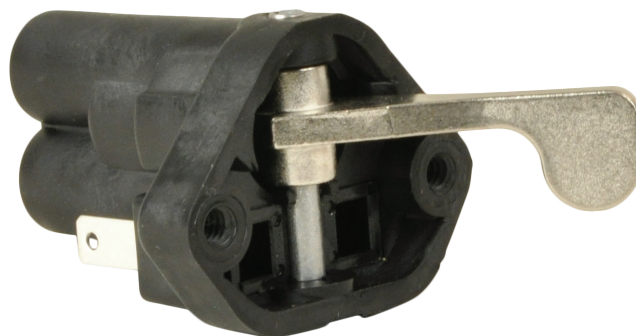


3-way air valve combined with
integral pressure switch

Designed for dashboard operation of
truck air system accessories

Engineered for functionality and durability

Integral Push-To-Connect fittings (PTC)



Technical data

Operating pressure:

0 to 150 psi (0 to 10 bar)

Operating temperature:

-20°F to +160°F (-20°C to +70°C)

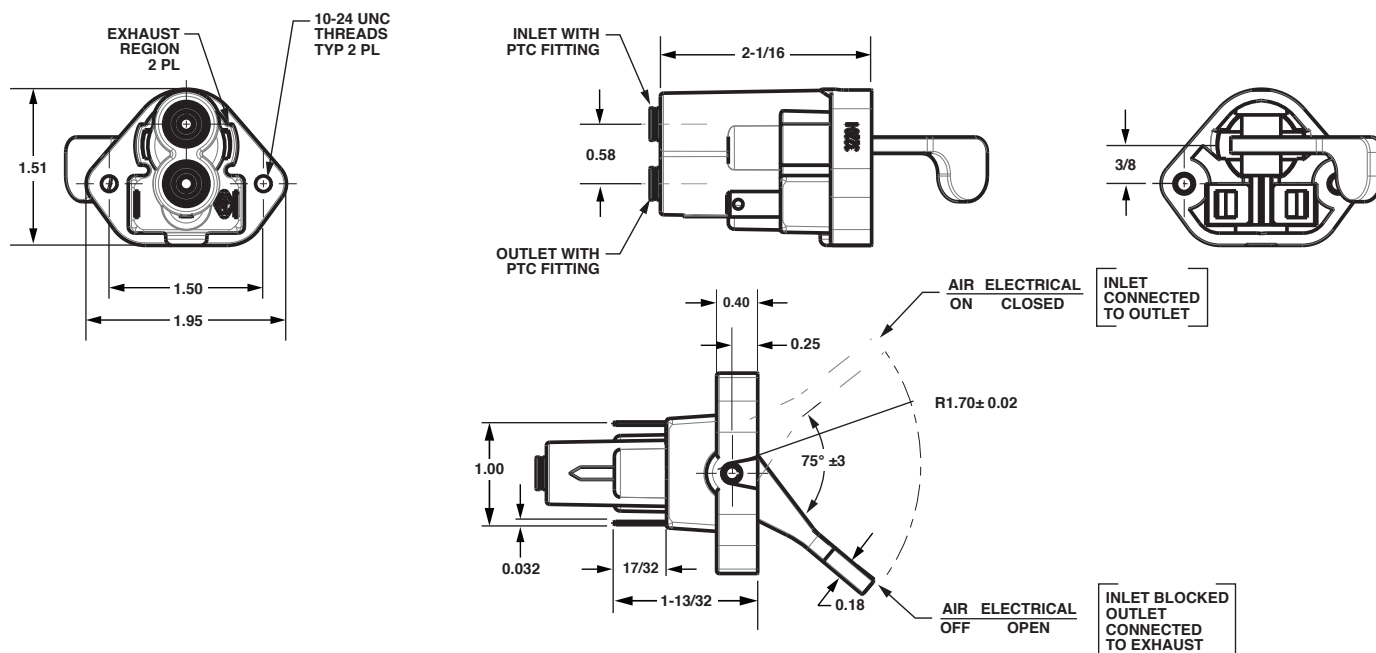
Tube O/D:

1/4"

Electrical connection:

Two 1/4" blade type electrical terminals

Dimensions (Inches)



Models

Model		Tube O/D	Nominal Voltage
3220-1	●	1/4"	12V

● In stock

◆ Please call 1.800.710.7823 for availability